



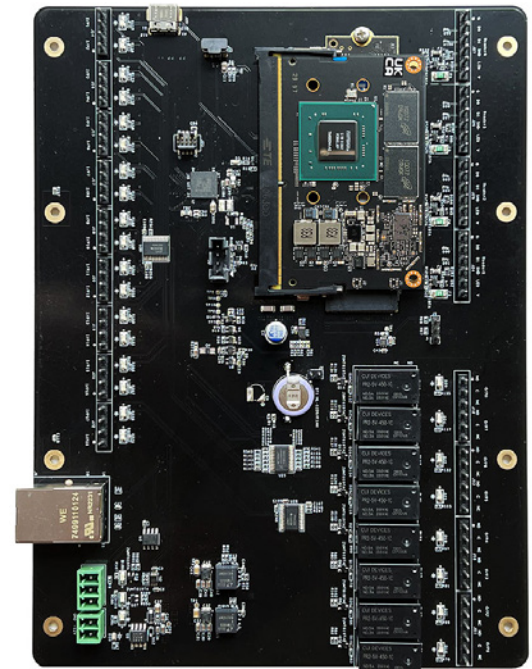
AI Controller – 4 Reader (AIC-4x)

Introducing the AI Controller – 4 Reader AIC-4x by BluBOX, the cutting-edge all-in-one platform that goes beyond traditional access control. With advanced features such as data analytics, video analytics, video camera, NVR, intercom, destination dispatch elevator control, LSP power management, and person reader operation, the AIC-4x provides a comprehensive security solution for any facility.

Built on an open platform architecture, the AIC-4x offers unparalleled flexibility for OEMs, channel partners, and end customers to customize the controller configuration that best suits their needs. With its multi-port design, the AIC-4x allows for easy control of four connected doors, making access management seamless and efficient.

Equipped with native connectivity, the AIC-4x performs access control, alarm management, and scheduled operations all in one package, independently of the host. This high-performance intelligent controller ensures reliable and efficient operation, even in a secure environment.

For partners seeking a comprehensive and open access control platform, the 4 Reader AIC-4x is the obvious choice. Not only does it deliver complete security and access control solutions, but it also offers innovative application extensions, interoperability, and data security. Trust BluBOX's AIC-4x to provide the ultimate access control solution for your facility.



Key Features

- Combines the capabilities of a door access controller with an NVR, Intercom, high-end video and data analytics processor
- Built on open platform architecture
- Multi-port design for easy control of two door
- High-performance intelligent controller
- Supports more card formats than any other controller

Key Benefits

- A single IoT device that provides access control, alarm, video management, video and data analytics, intercom, video, voice, text intercom, destination dispatch elevator integration, appearance, speech and voice recognition, power management, and wireless lock integration
- Next evolution of controllers for the security industry
- Reduces the cost and complexity of deploying integrated systems
- Achieve a greater level of integration, capability and scalability

AI Controller – 4 Reader (AIC-4x)

Specifications

Access Control

- Natively supports for up to 4 readers / 18 inputs / 8 outputs
- Door Management
- Remote Lock/Unlock
- Credential Access
- Card Access Simulation
- REX Access
- Alarms - Door Forced, Door Held
- Door Active Schedules
- Person Active Schedules
- Multi-Rex Support on a Door
- Multi-Reader Support on a Door - Each reader can be set to a unique mode
- Unlimited Person/Cardholder Capacity
- Unlimited System Access Levels
- Unlimited Access Levels per Person
- 100 Card Formats
- If/Then macro capabilities (coming soon)

General

| | |
|--------------------|---|
| Primary Power | POE, POE+, 12V DC +/- 10% 2.5A Max |
| Networking | 100/1000 BASE-T Ethernet |
| Credentials | Face, Voice, Name, Bluetooth (BlUID), Prox, MiFARE, QR/Barcode, PIN |
| RFID | 13.56 MHz + 125 KHz w/ Optional HID Reader |
| Bluetooth | version 4.2 |
| Operational Reader | HID |
| Reader Power | 12 VDC +/-10%, 600mA maximum at each reader |
| Data Inputs | TTL Compatible |
| RS-485 Mode | 9600 to 115200 bps, asynchronous, half-duplex, 1 start bit, 8 data bits, and 1 stop bit. Maximum cable length: 2000 ft. (609.6 m) |
| LED Output | |
| Buzzer Output | |
| Inputs | 18 re-programmable inputs for cabinet tamper and ups fault monitoring |
| Outputs | 8 Relays, 2 Form C: NO/NC: 0.5 A / 0.5A A @ 125 Vac, 2 A / 2 A @ 30 Vdc |
| Serial I/O | 2 Wire RS-485, 9600 to 115200 bps, asynchronous, half-duplex, 1, 8, 1 |
| Micro USB | 5VDC, 500mA Max |
| Mobile Gesture | Tap, Twist, Wave, In Range, Behavior, BluREMOTE |
| Door Controller | Yes - 4 Doors, 4 Readers |
| Battery | Memory/Clock Backup: 3 Volt Lithium, type BR2330 rechargeable |
| microSD Card | microSD or microSDHC; 2GB to 8GB |
| Host Communication | 10/100/1000 Ethernet Secure TCP/IP Connection IOT Hub Compatible |

AI Controller – 4 Reader (AIC-4x)

Reader Interface

| | |
|------------------------|---|
| Reader Port | 600mA Max |
| Inputs | 6 re-programmable inputs for cabinet tamper and ups fault monitoring |
| Outputs | 2 Relays, 2 Form C: NO/NC: 0.5 A / 0.5A A @ 125 Vac, 2 A / 2 A @ 30 Vdc |
| Serial I/O | 2 Wire RS-485, 9600 to 115200 bps, asynchronous, half-duplex, 1, 8, 1 |
| Micro USB | 5VDC, 500mA Max |
| Fan | 5V DC |
| Optic Tamper | Yes |
| Pressure Sensor Output | 14b Accuracy: ± 0.015 PSI (± 0.1 kPa) |
| Battery | Memory/Clock Backup: 3 Volt Lithium, type BR2330 rechargeable |

Video

| | |
|---------------------|--|
| NVR | Yes - Up to 4 Cameras |
| SOM | NVIDIA Jetson Nano |
| AI Performance | 472 GFLOPs |
| GPU | 128-core NVIDIA Maxwell™ GPU |
| CPU | Quad-Core ARM® |
| Memory | 4 GB 64-bit LPDDR4 25.6GB/s |
| SOM Storage | 16 GB eMMC 5.1 |
| Solid State Storage | M.2 2280 Nvme SSD up to 8TB |
| Video Encode | 1x 4Kp30, 2x1080p60, 4x1080p30, 4x720p60, 9x720p30 (H.265 & H.264) |
| Video Decode | 1x 4Kp60, 2x4Kp30, 4x1080p60, 8x1080p30, 9x720p60 (H.265 & H.264) |
| Display | 2 multi-mode DP 1.2/eDP 1.4/HDMI 2.01 x2 DSI (1.5Gbps/lane) |

Cable Requirements

| | |
|------------------|---|
| Power and Relays | 1 twisted pair, 18 to 16 AWG |
| Ethernet | CAT-5, minimum, CAT-6 preferred |
| Reader TTL | 6-conductor, 18 AWG, 500 feet (150 m) maximum |
| Reader RS-485 | 1 twisted pair, shielded, 120 ohm impedance, 24 AWG, 2,000 ft. (610 m) maximum |
| I/O Devices | 1 twisted pair with drain wire and shield, 120 ohm impedance, 24 AWG, 4,000 ft. (1,219 m) maximum |
| Alarm Input | 1 twisted pair, 30 ohms maximum |

Power Mangement

Monitored Outputs and Relay Control 2

Environmental

Temperature -55 to +85 °C, storage, 0 to +70 °C, operating **Humidity** 5 to 95% RHNC

Mechanical

Dimensions H 1" (25 mm) x W 5.6" (142.3 mm) x L 4" (101.6 mm) **Weight** 2 Lbs.

Compliance and Warranty

Product Compliance UL 294 Recognized, FCC Part 15 Class A, CE Compliant, RoHS (2011/65/EU & 2015/863), EU REACH (1907/2006)

Warranty The product is warranted free from defects in material and workmanship under normal use and service with proper maintenance for one year from the date of factory shipment.

BluBØX: Security Reimagined

www.blub0x.com

[e. info@blub0x.com](mailto:info@blub0x.com)

p. (844) 425-8209

FOLLOW US ON  

BluBØX Security, Inc. is a manufacturer and service provider of web-cloud based physical security products. Its BluSKY service delivers enterprise class unified access control, alarm management, video surveillance, biometrics and visitor management on any device, anywhere, any time. Its BluCHIP open hardware platform provides industry standard components and a proprietary line of fully integrated multi-factor, multi-biometric Person Readers.